

PB-D / PB-W Push Button Free Exit

A push-button free-exit device with a key-switch override and LED indicator, built into a rugged metal housing with a stainless-steel faceplate and secure cam-lock access door. Designed for durability and outdoor use, it mounts directly to any standard gooseneck pedestal for convenient installation at driveway gates or walk gates with access controlled entry points. PB-D for Driveway Gates / PB-W-5 & PB-W-10 for Walk Gates

Pin / Wire Functions

RED wire – LED positive (12V+)

This powers the internal LED indicator.

BLACK wire – LED negative (ground / common)

Return path for the LED.

GREEN wire – NO (Normally Open) contact

This is one side of the switch contact.

It is *open* until the button is pressed.

GREEN wire – COM (Common Open)

This is the common terminal for the NO switch contact.

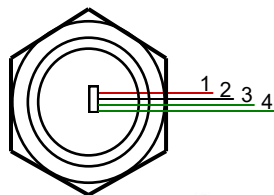
The LED has its own **RED (+)** and **BLACK (-)** wires. These are independent of the switch contacts.

The switch portion uses two **green** wires:

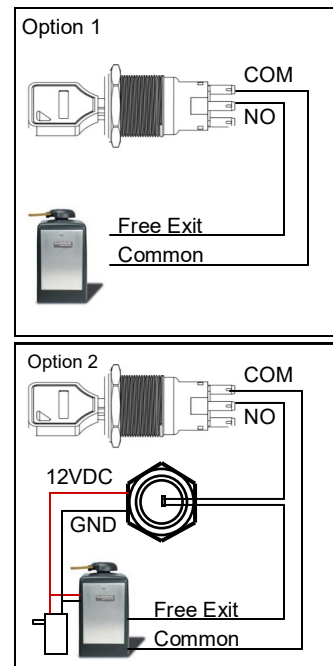
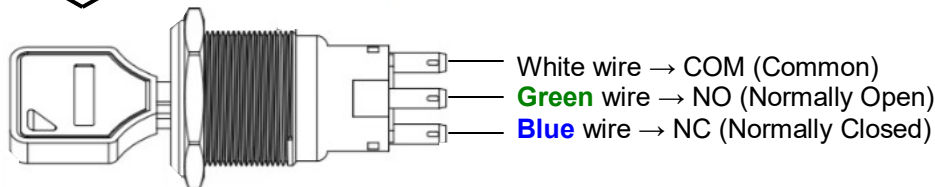
COM (common) goes to your signal source.

NO (normally open) goes to your load or input.

When the button is pressed, the NO and COM green wires connect.



1. **RED** wire 12V + for LED +
2. **BLACK** wire Com - for LED -
3. **GREEN** wire NO Normally Open
4. **GREEN** wire Com Common Open



Power source from
gate operator or
transformer

Option 1 Hold-Open Contact (Toggle Mode) In this configuration, the keyswitch acts like a maintained switch.

Turn key ON → closes a circuit.

Gate goes into Hold Open mode and stays open until the key is turned back to OFF position.

The push button is not involved in this mode; the keyswitch alone controls the hold-open state.

NOTE: This is useful for leaving the gate open for deliveries, parties, workers, etc.

Option 2 On/Off Power to Push Button The keyswitch controls whether the push button is active.

In ON Position

Keyswitch allows gate to open through to the push button.

Push button operates normally open or closed circuit.

Pressing the button sends a momentary open signal to the gate operator.

In OFF Position

Keyswitch breaks the circuit to the push button.

Push button will **not** open the gate.

This configuration is perfect for:

Disabling free-exit at night.

Preventing unauthorized entry.

Vacation or security mode

Note: Always consult the wiring diagram of your specific gate automation system for correct connections.

Incorrect wiring can damage the control unit or the key switch.